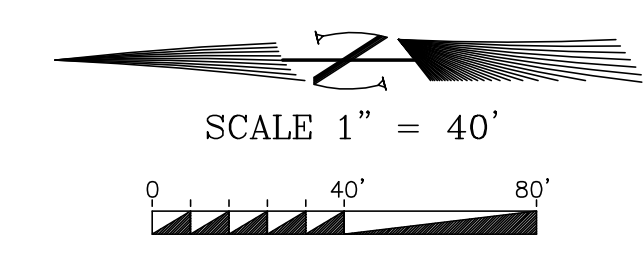


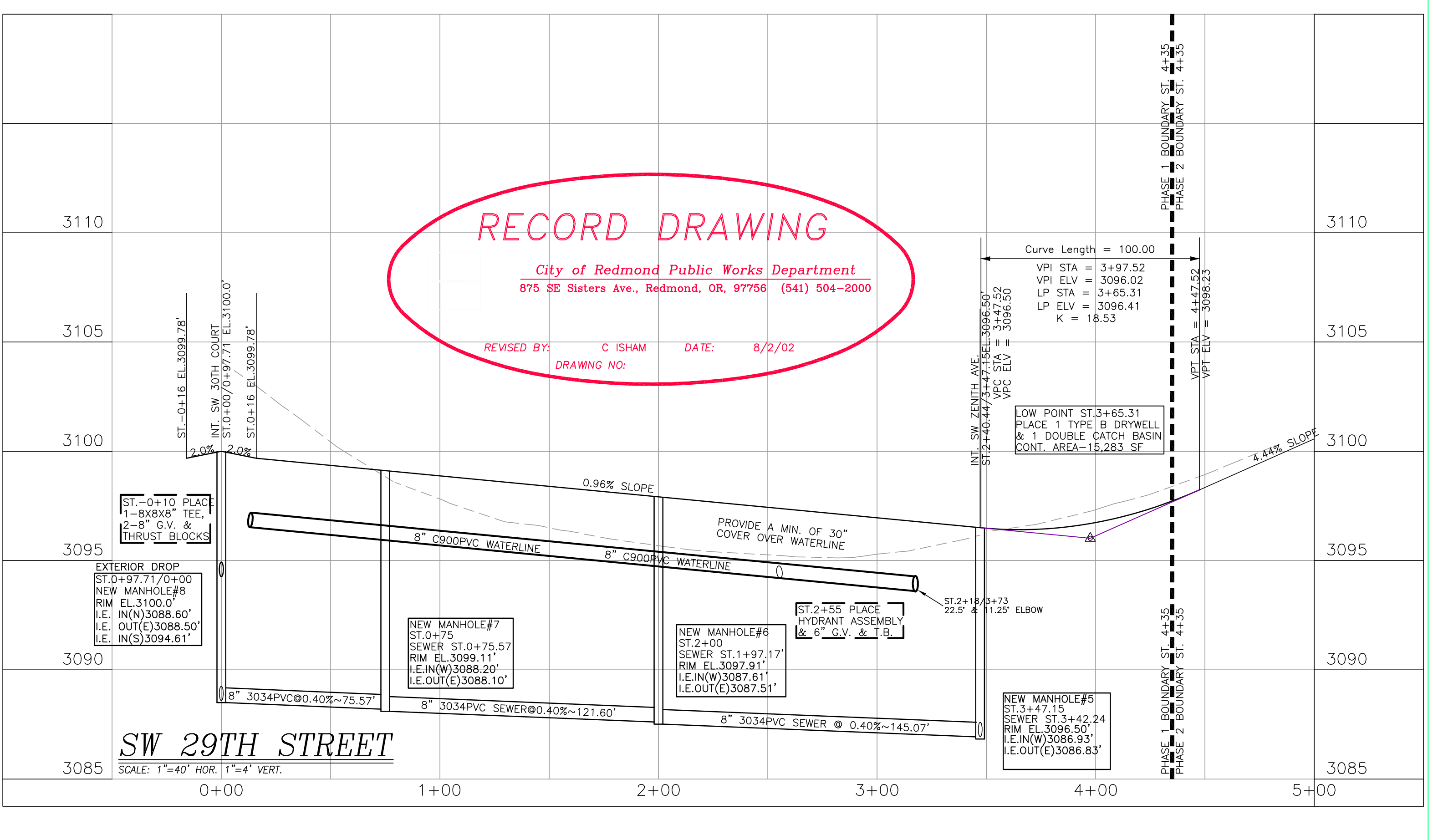
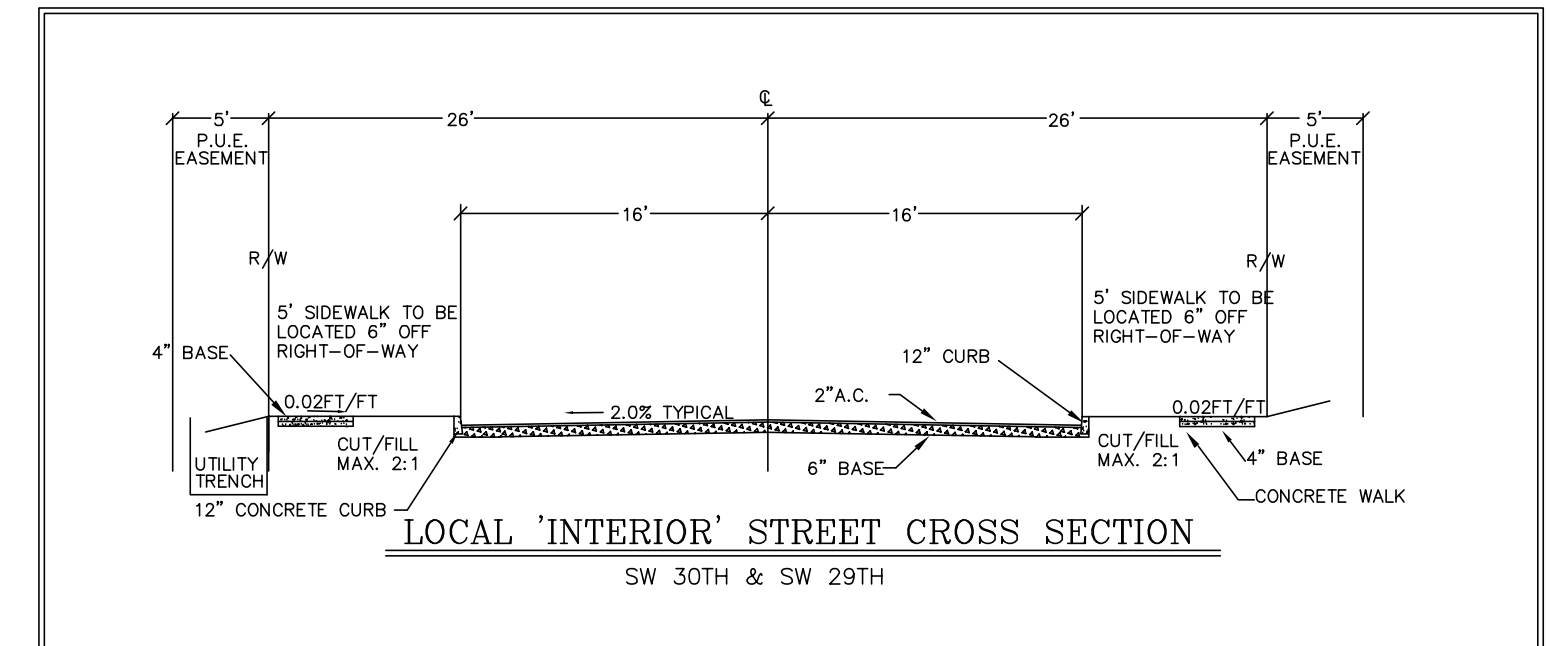
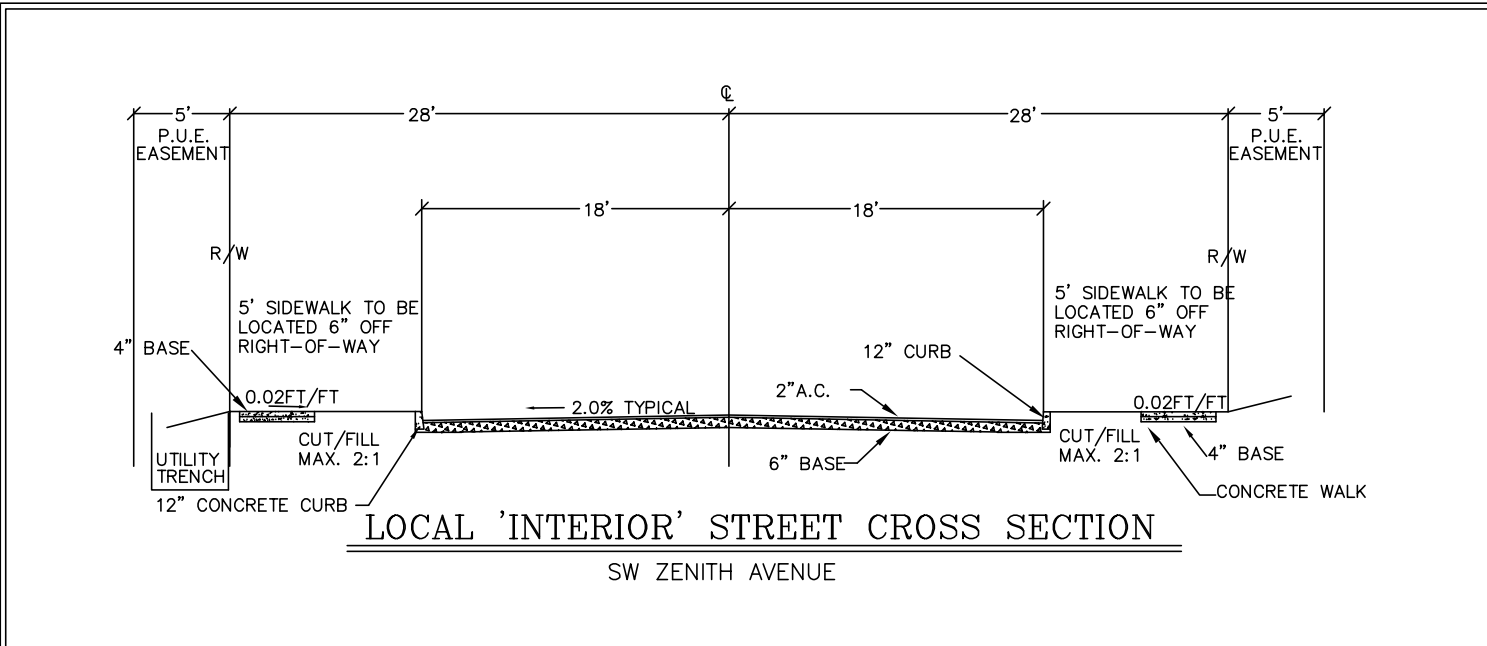
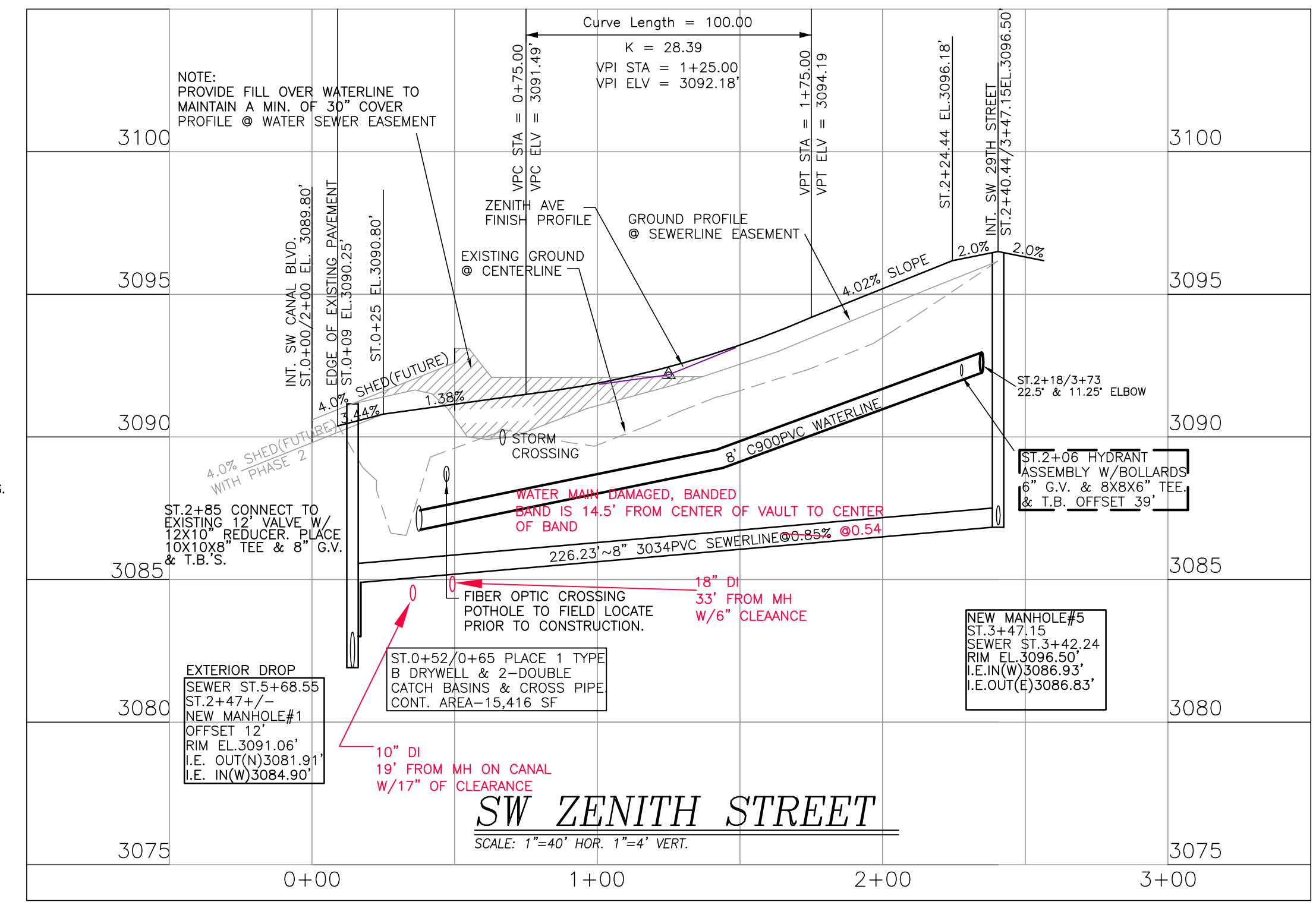
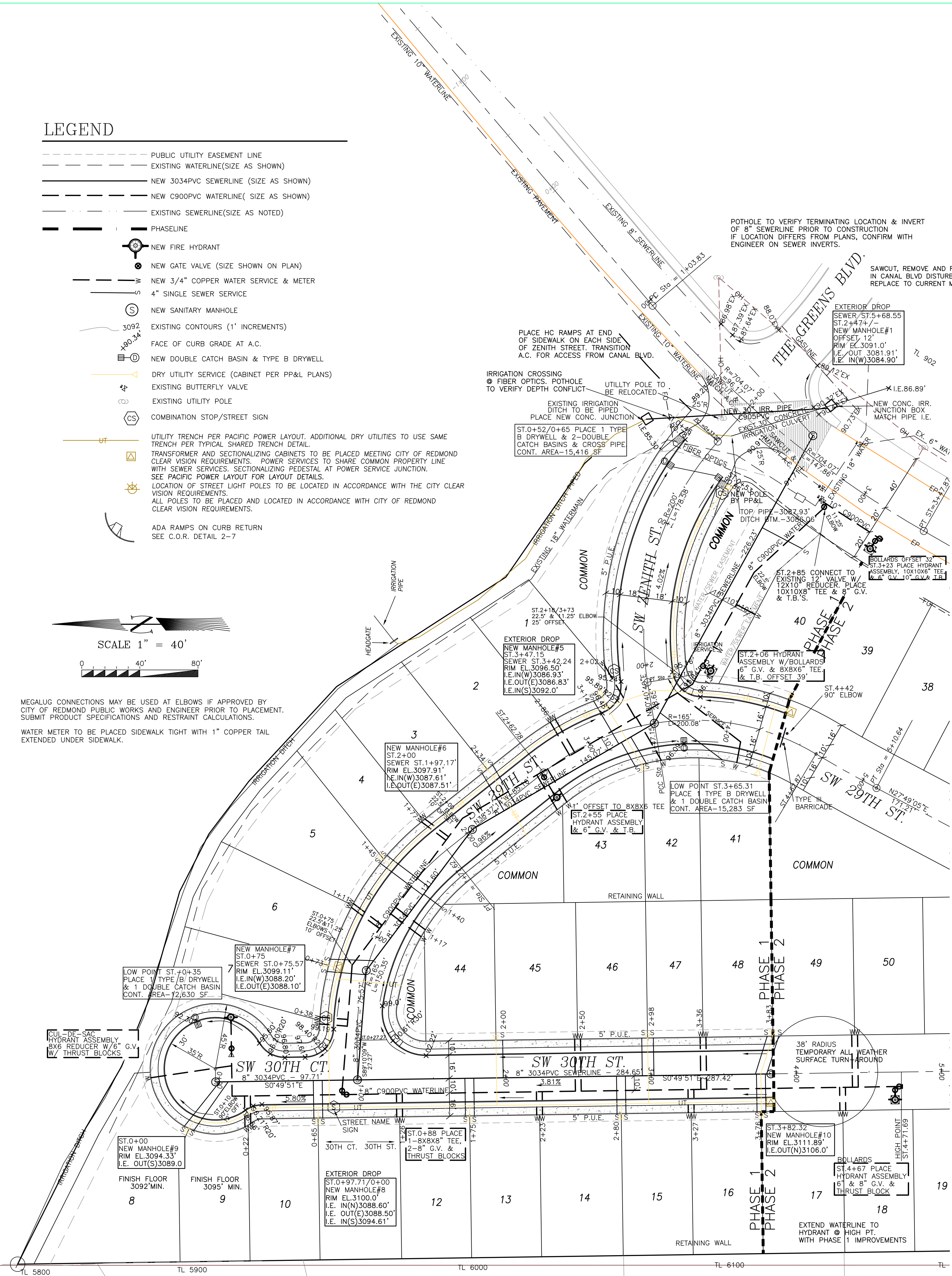
LEGEND

- PUBLIC UTILITY EASEMENT LINE
- EXISTING WATERLINE(SIZE AS SHOWN)
- NEW 3034PVC SEWERLINE (SIZE AS SHOWN)
- NEW C900PVC WATERLINE (SIZE AS SHOWN)
- EXISTING SEWERLINE(SIZE AS NOTED)
- PHASELINE
- NEW FIRE HYDRANT
- NEW GATE VALVE (SIZE SHOWN ON PLAN)
- NEW 3/4" COPPER WATER SERVICE & METER
- 4" SINGLE SEWER SERVICE
- NEW SANITARY MANHOLE
- EXISTING CONTOURS (1' INCREMENTS)
- FACE OF CURB GRADE AT A.C.
- NEW DOUBLE CATCH BASIN & TYPE B DRYWELL
- DRY UTILITY SERVICE (CABINET PER PP&L PLANS)
- EXISTING BUTTERFLY VALVE
- EXISTING UTILITY POLE
- COMBINATION STOP/STREET SIGN
- UTILITY TRENCH PER PACIFIC POWER LAYOUT. ADDITIONAL DRY UTILITIES TO USE SAME TRENCH PER TYPICAL SHARED TRENCH DETAIL.
- TRANSFORMER AND SECTIONALIZING CABINETS TO BE PLACED MEETING CITY OF REDMOND CLEAR VISION REQUIREMENTS. POWER SERVICES TO SHARE COMMON PROPERTY LINE WITH SEWER SERVICES. SECTIONALIZING PEDESTAL AT POWER SERVICE JUNCTION. SEE PACIFIC POWER LAYOUT FOR LAYOUT DETAILS.
- LOCATION OF STREET LIGHT POLES TO BE LOCATED IN ACCORDANCE WITH THE CITY CLEAR VISION REQUIREMENTS.
- ALL POLES TO BE PLACED AND LOCATED IN ACCORDANCE WITH CITY OF REDMOND CLEAR VISION REQUIREMENTS.
- ADA RAMPS ON CURB RETURN SEE C.O.R. DETAIL 2-7



MEGALUG CONNECTIONS MAY BE USED AT ELBOWS IF APPROVED BY CITY OF REDMOND PUBLIC WORKS AND ENGINEER PRIOR TO PLACEMENT. SUBMIT PRODUCT SPECIFICATIONS AND RESTRAINT CALCULATIONS.

WATER METER TO BE PLACED SIDEWALK TIGHT WITH 1" COPPER TAIL EXTENDED UNDER SIDEWALK.



ANDERSON ENGINEERING & SURVEYING INC.

PHONE: (541) 923-4307 PHONE: (541) 947-4407
 852 SW 15TH STREET HC 64 BOX 24
 P.O. BOX 419 REDMOND, OREGON 97756
 E-MAIL: aes@colet.com WEB SITE: andersonengineering.com

SUMMER CREEK P.U.D. PHASE 1

PLAN & PROFILE

RECORD DRAWING

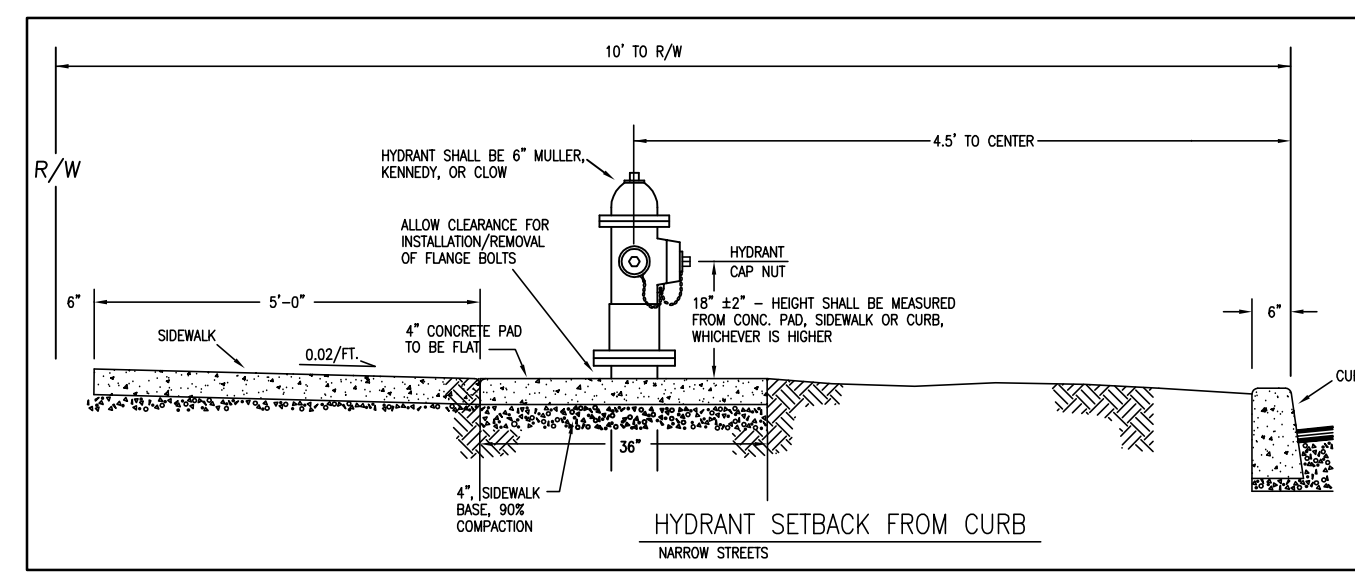
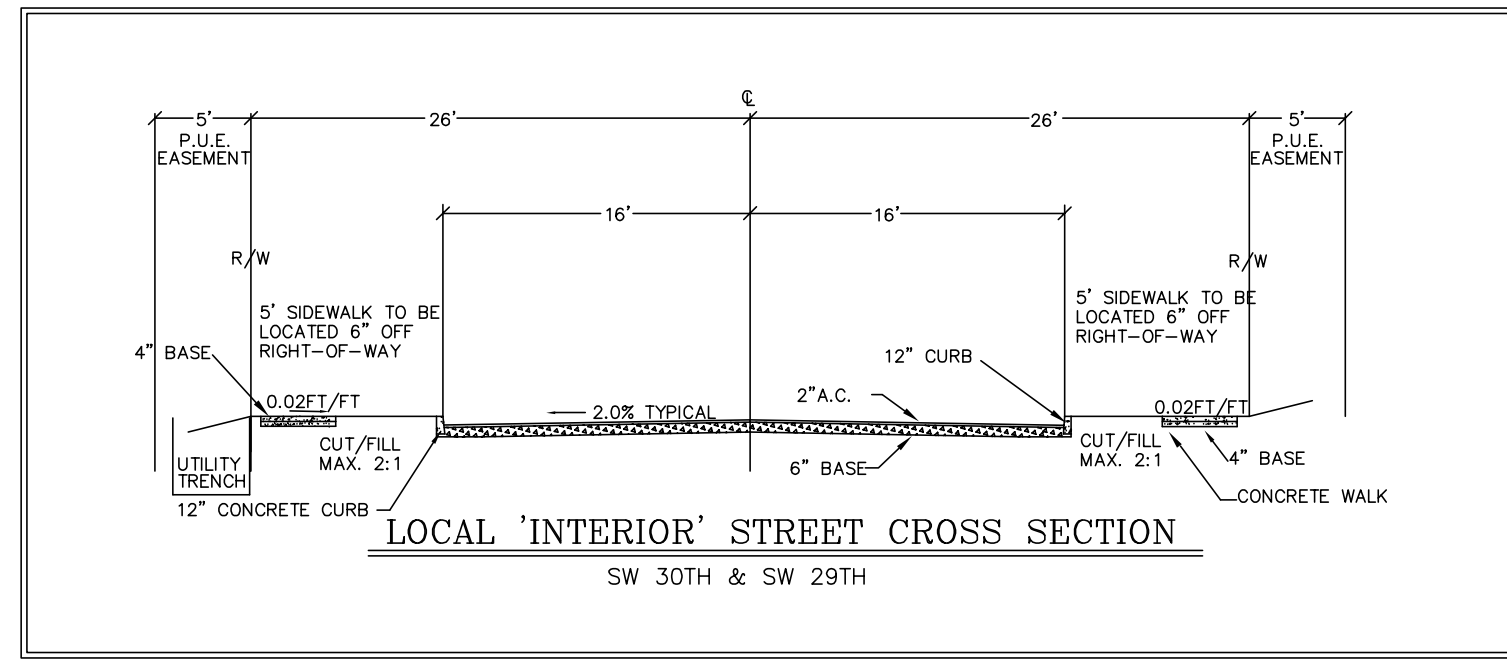
City of Redmond Public Works Department
 875 SE Sisters Ave., Redmond, OR, 97756 (541) 504-2000

REVISED BY: C ISHAM DATE: 8/2/02
 DRAWING NO:

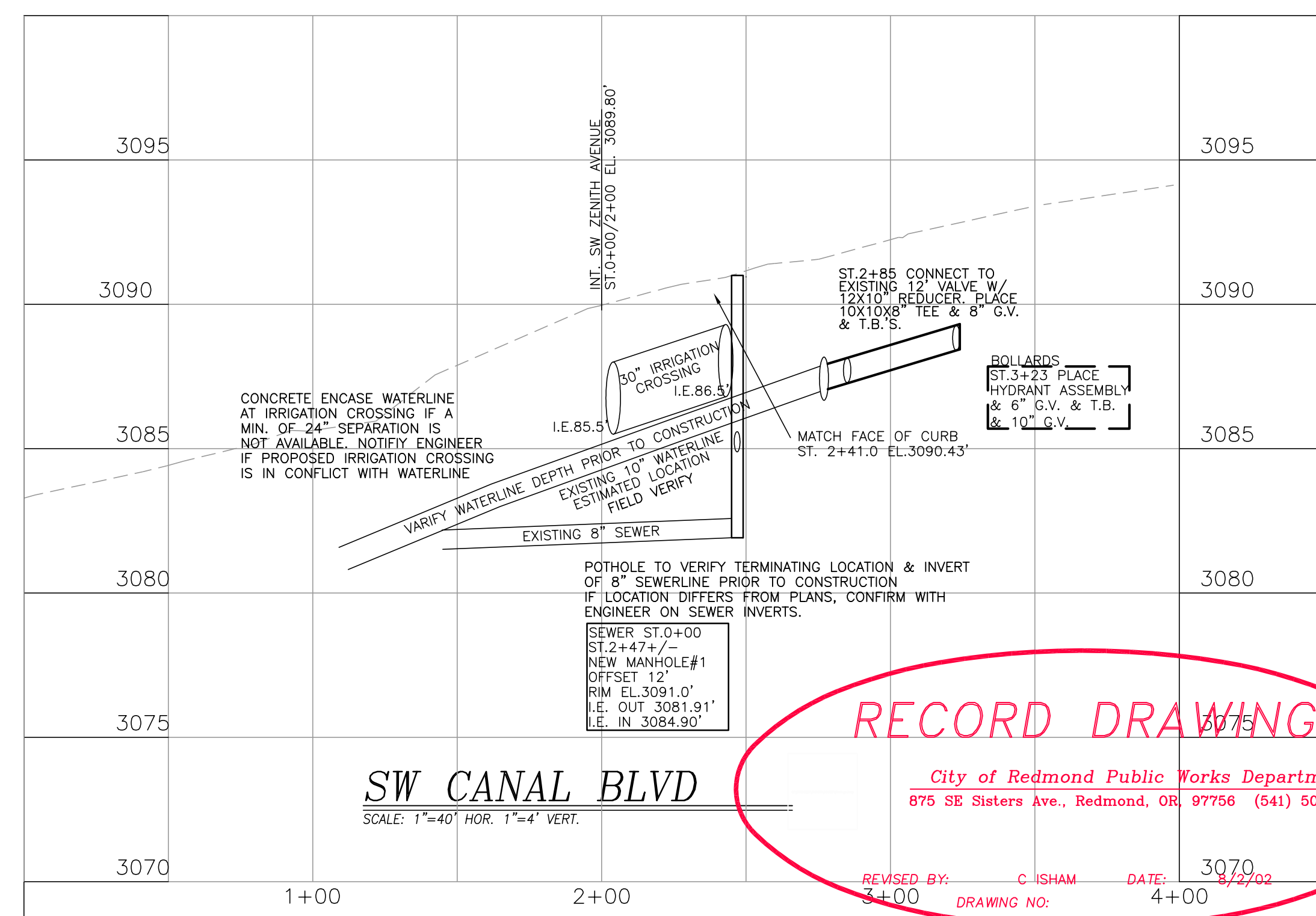
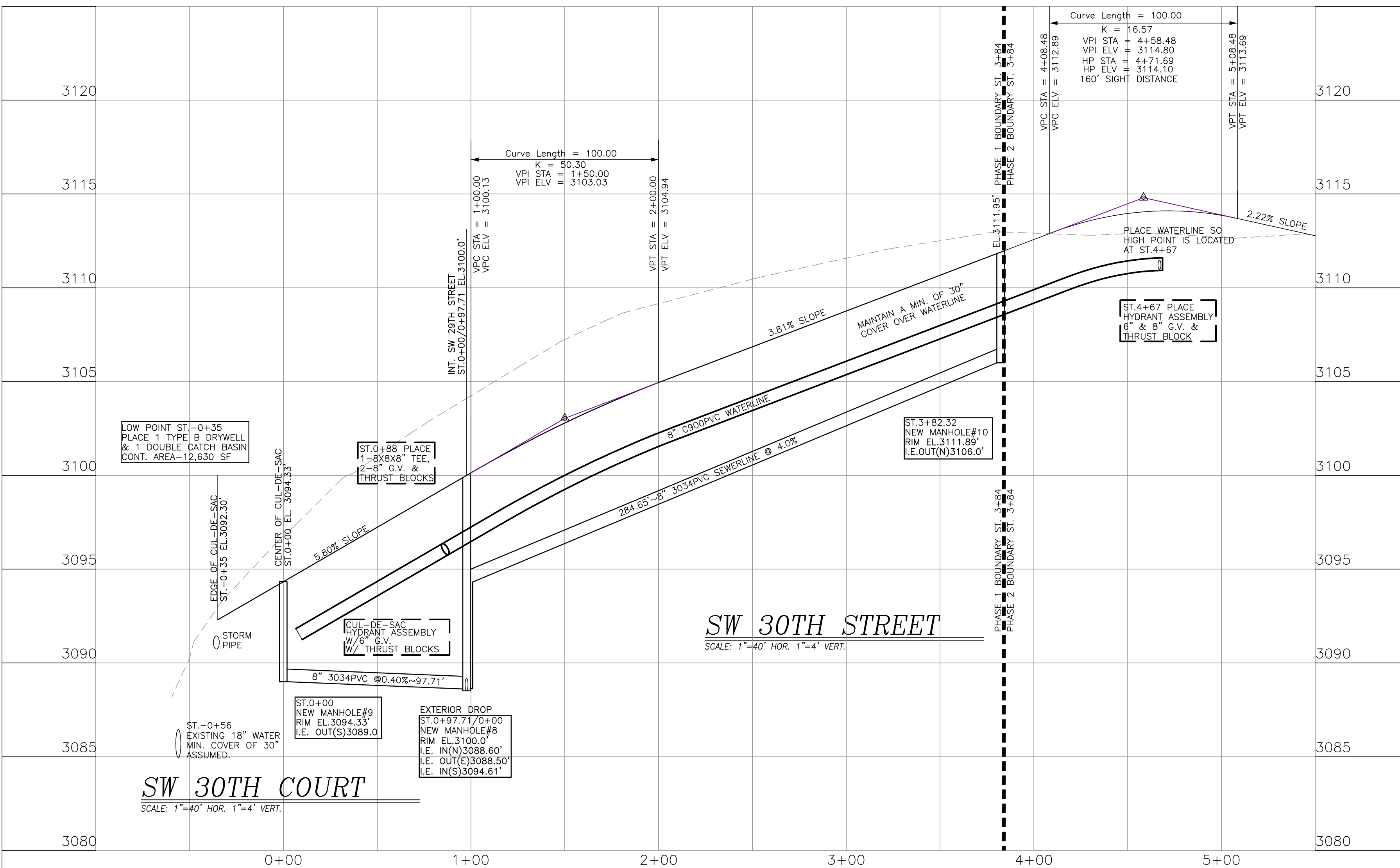
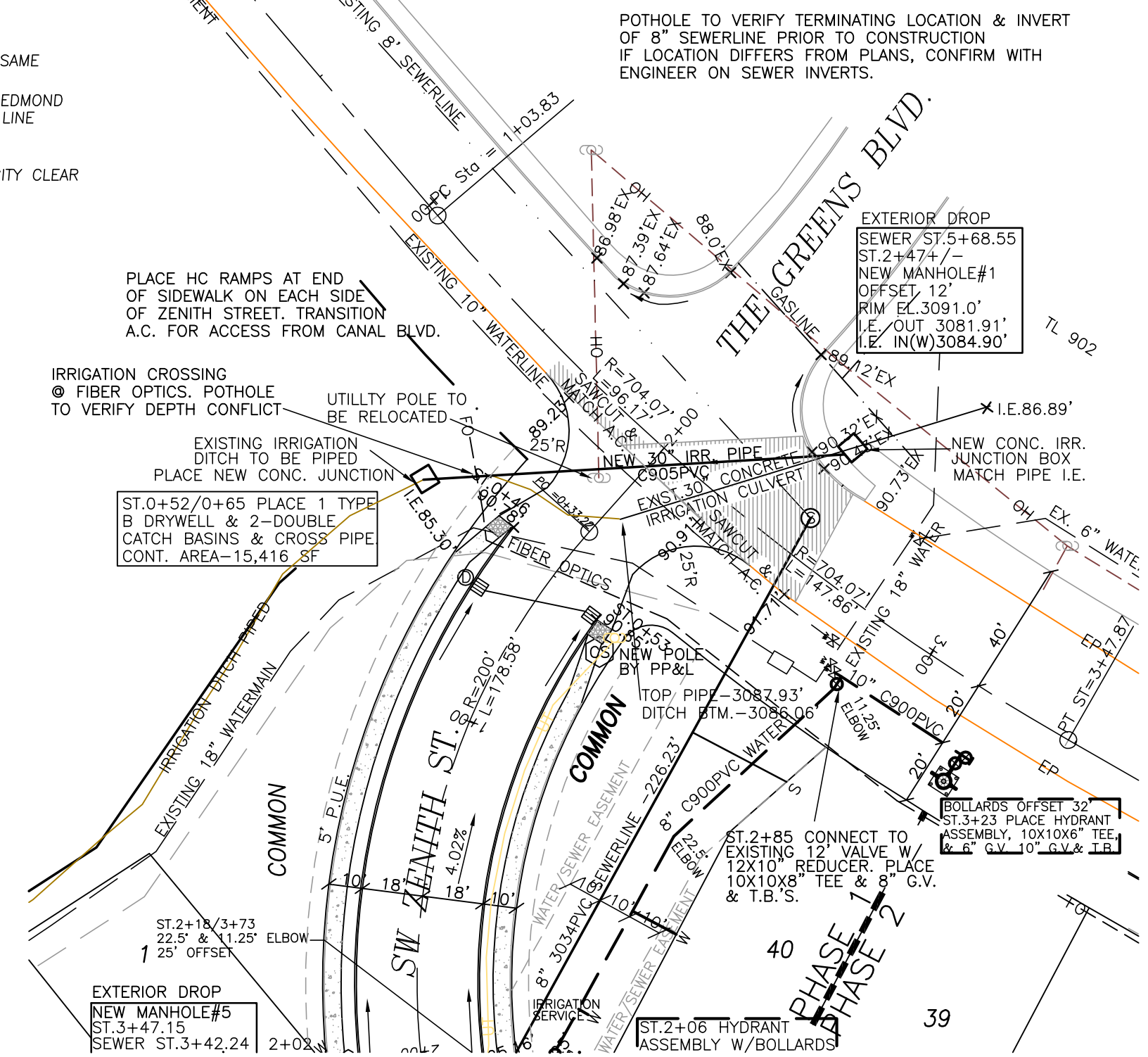
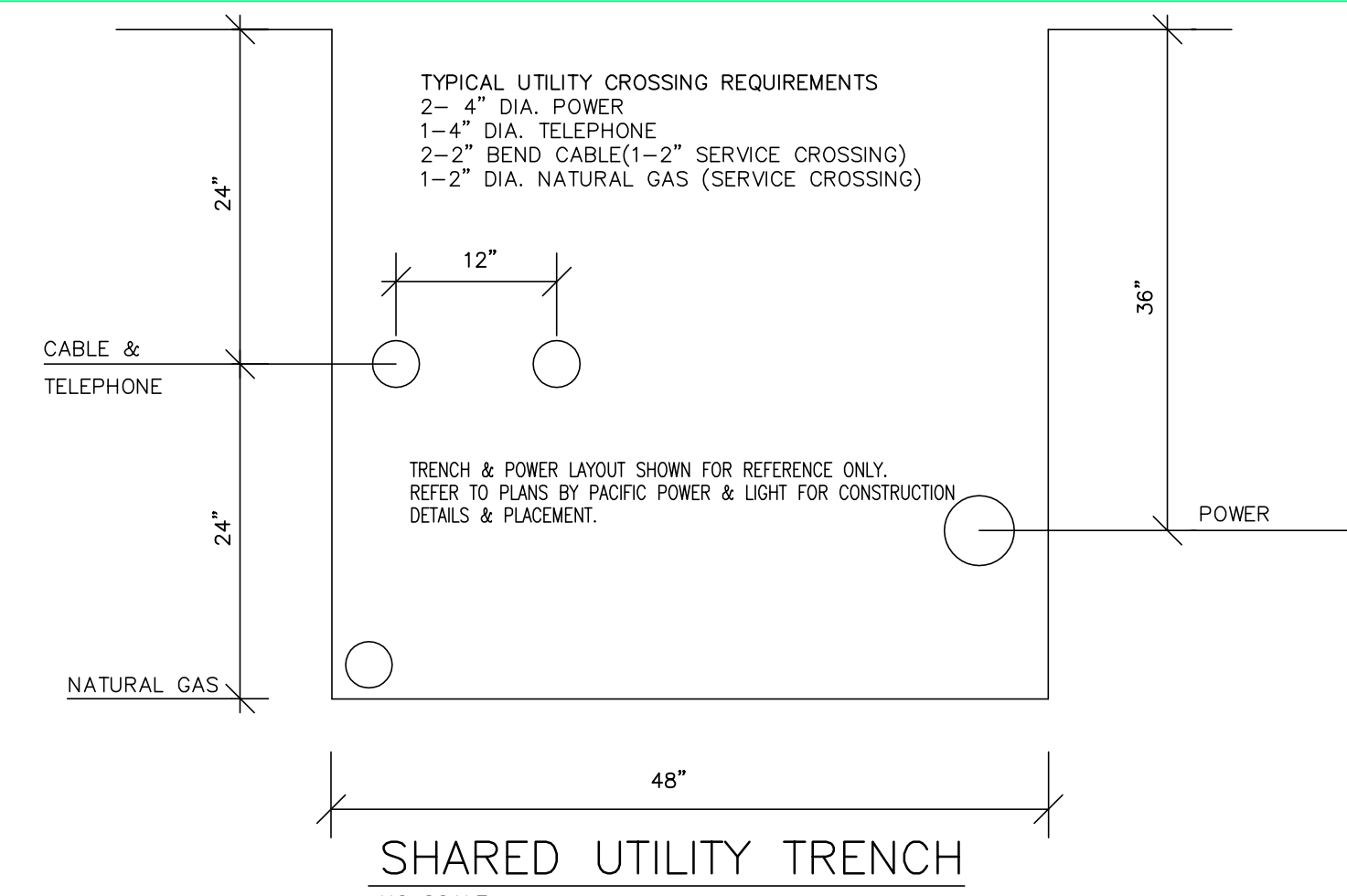
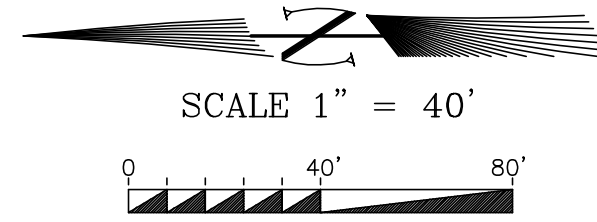
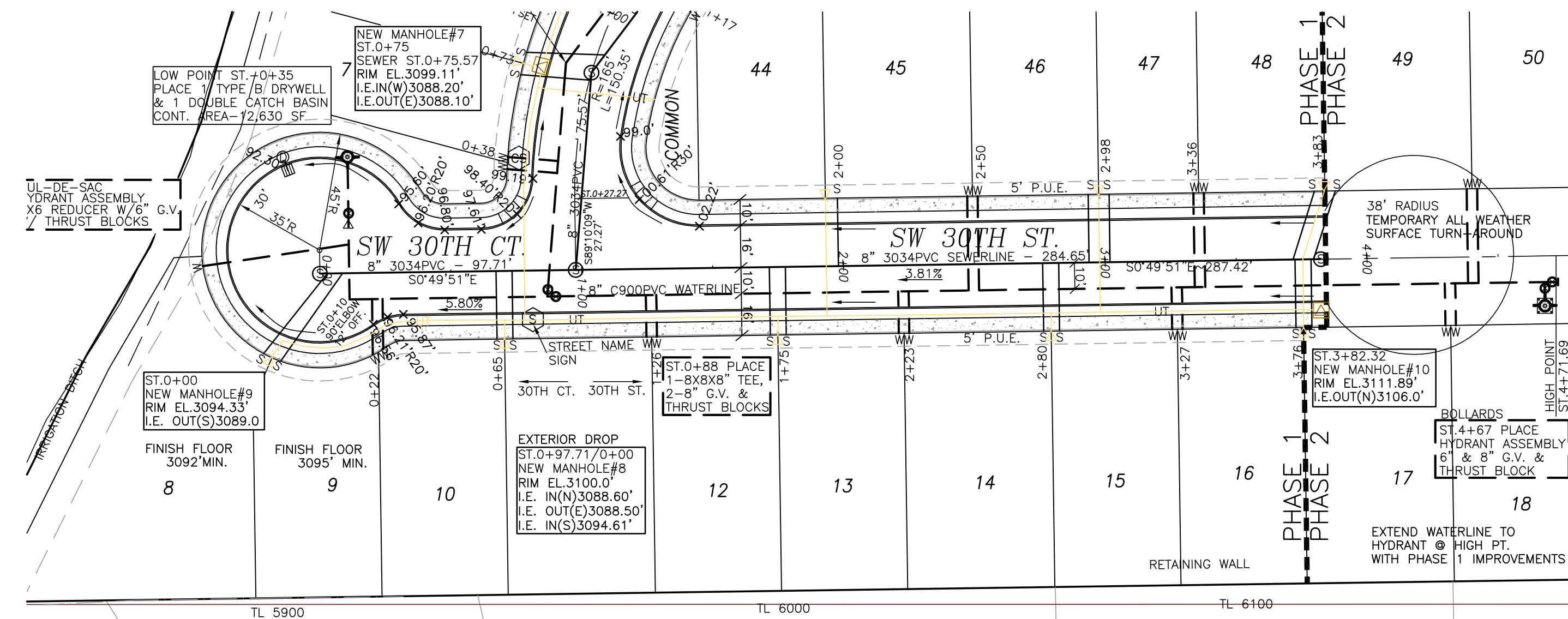
BY:	SAW
REVISION:	01-29-01

DATE: DECEMBER 2000
 SCALE: 1"=1'
 FILE: 0084PLAN
 DESIGN: SAW
 CHK BY: TRB
 PROJECT #: 00-84R

SHEET 3 OF 6 SHEETS



- ### LEGEND
- PUBLIC UTILITY EASEMENT LINE
 - - - EXISTING WATERLINE (SIZE AS SHOWN)
 - NEW 3034PVC SEWERLINE (SIZE AS SHOWN)
 - NEW C900PVC WATERLINE (SIZE AS SHOWN)
 - - - EXISTING SEWERLINE (SIZE AS NOTED)
 - PHASELINE
 - ⊙ NEW FIRE HYDRANT
 - ⊙ NEW GATE VALVE (SIZE SHOWN ON PLAN)
 - NEW 3/4" COPPER WATER SERVICE & METER
 - 4" SINGLE SEWER SERVICE
 - ⊙ NEW SANITARY MANHOLE
 - 2990 EXISTING CONTOURS (2' INCREMENTS)
 - FACE OF CURB GRADE AT A.C.
 - NEW DOUBLE CATCH BASIN & TYPE B DRYWELL
 - DRY UTILITY SERVICE (CABINET PER PP&L PLANS)
 - EXISTING BUTTERFLY VALVE
 - EXISTING UTILITY POLE
 - COMBINATION STOP/STREET SIGN
 - UTILITY TRENCH PER PACIFIC POWER LAYOUT, ADDITIONAL DRY UTILITIES TO USE SAME TRENCH PER TYPICAL SHARED TRENCH DETAIL.
 - TRANSFORMER AND SECTIONALIZING CABINETS TO BE PLACED MEETING CITY OF REDMOND CLEAR VISION REQUIREMENTS. POWER SERVICES TO SHARE COMMON PROPERTY LINE WITH SEWER SERVICES. SECTIONALIZING PEDISTAL AT POWER SERVICE JUNCTION. SEE PACIFIC POWER LAYOUT FOR LAYOUT DETAILS.
 - LOCATION OF STREET LIGHT POLES TO BE LOCATED IN ACCORDANCE WITH THE CITY CLEAR VISION REQUIREMENTS.
 - ADA RAMP ON CURB RETURN
SEE C.O.R. DETAIL 2-7



RECORD DRAWING

City of Redmond Public Works Department
875 SE Sisters Ave., Redmond, OR 97756 (541) 504-2000

REVISED BY: C. ISHAM DATE: 8/22/02
3+00 DRAWING NO: 4+00

ANDERSON ENGINEERING & SURVEYING INC.
PHONE: (541) 923-4307
652 SW 15TH STREET
P.O. BOX 419
REDMOND, OREGON 97756
E-MAIL: aes@coiret.com



SUMMER CREEK P.U.D. PHASE 1
PLAN & PROFILE
REDMOND, OREGON

BY	SAW
REVISION	01-29-01
DATE:	DECEMBER 2000
SCALE:	1=1
FILE:	0084PLAN
DESIGN:	SAW
CHK BY:	TRB
PROJECT #:	00-84R
SHEET	4
OF 6 SHEETS	